

Overview

The Body Worn Camera VM780 is tailored to capture, store, and share video, audio, and image evidence in the field. It integrates a body camera with a remote speaker microphone, and allows you to perform video dispatch and command over 3G/4G/Wi-Fi, make voice communication, and initiate an emergency alarm in the mission critical conditions.

• PTT Button

• Audio Recording (Programmable)

• Photo Taking (Programmable)

• Video Recording

• Emergency Initiating

• ≥9 Hours per Battery for Continuous Video Recording

• 10 Days per Battery in Standby Mode

• 216° Rotatable Camera 1080P High-definition

• Easy for You to Replace the Battery Anywhere and Anytime

• For Charging, Data Export, and Audio Output, 3 Functions in 1 Port

• For Charging and Data Collection, 2 Functions in One Contact

Obvious Power Button

2.8" Color Touch Screen

3500mAh Battery

Battery Latch

Charging Contact

On-site Real-time Video Streaming

With 3G/4G/Wi-Fi, VM780 can transmit the on-site real-time video back to the command & dispatching center, to let the dispatcher see how events are actually unfolding in the field.

Audio Group Call

With the dispatcher involved, VM780 can initiate one-to-one and one-to-many calls with other VM780s over 3G/4G/Wi-Fi. The instant communication can greatly enhance the work efficiency.

High Efficient Video Compression

VM780 supports H.265 video compression technology, which requires much narrower network bandwidth for real time HD video transmission than that of H.264.

216° HD Rotatable Camera

The lens of VM780 can be rotated vertically by 216°, which can provide optimal angle of view and flexible wearing positions for users to capture critical events.

High Capacity Battery

Equipped with a 3500mAh battery, VM780 can provide more than 9 hours battery life for continuous video shooting with 720P@30FPS. Besides, extra battery replacement is supported.

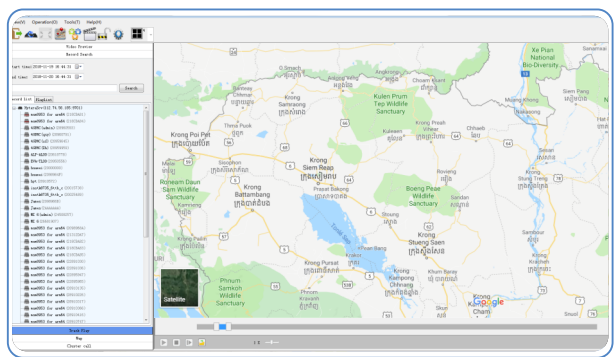
Advanced Data Encryption

Vm780 adopts the AES256 advanced encryption technology to protect all the captured evidence (including images, audio, and videos) in local storage or during transmission.

Real-time Video Transfer & Centralized Evidence Mangement Solution



SmartEye System

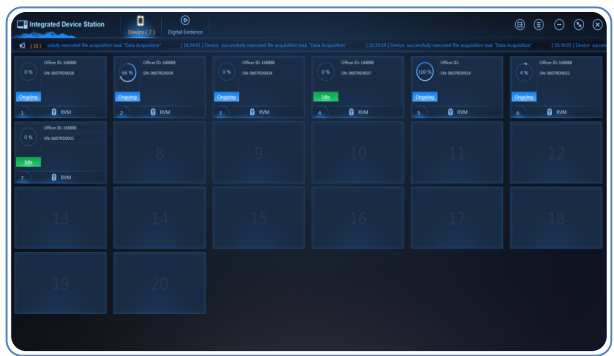


SmartEye System is an intelligent management platform for BWCs. It can provide a convenient way for you to real-time monitor and control the on-site BWCs.

Highlights:

- Real-time Video Pulling
- Staff Status Presence, Online/Offline
- Map View, GPS Positioning
- GPS Positioning History Track View and Playback
- Authority Control for Different Users

Integrated Device Station (IDS)

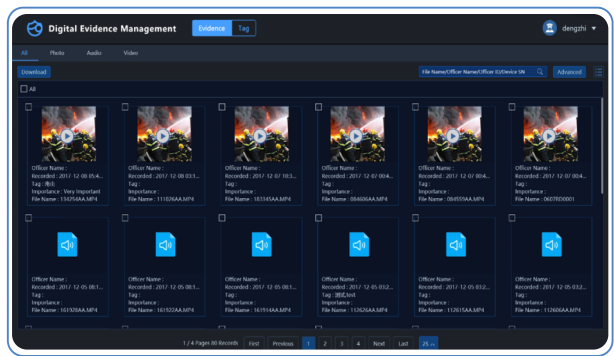


Running on the PC, IDS collects and stores digital evidence from the BWCs by multi-unit chargers. With intuitive GUI, you can review, manage, and share data simply and efficiently.

Highlights:

- Manage the Device comprehensively
- Query and Replay the Local Data
- Import and Upload the Data to the Cloud (DEM Server) automatically
- Clear the Collected Data from BWCs automatically
- Satisfy Data Protection Requirement

Digital Evidence Management Platform



Digital Evidence Management Platform collects and stores the digital evidence on the public security network. You can tag the evidence and find it easily through key words. For data security, you can assign different permissions to different users.

Highlights:

- Capable of Processing Massive Data
- Redundancy Backup and Load Balancing Mechanism for Reliability
- Cloud Server for Centralized Storage and Control
- Automatic Data Upload
- Rich Interface to be Compatible with Other Systems
- Role-based Access Control and User Authorization for Security